

CV300 BCG – DRUVA® PUR CHECK VALVE FOR PURE GASES



SEAT MATERIAL BRASS/CERAMICS, 300 BAR WORKING PRESSURE, BRASS CHROME PLATED

Used in pipelines, the CV300 BCG prevents an undesirable flow in the opposite direction to the main flow direction.

Mounted in the high-pressure area of manifolds of pure gas supply systems, the CV300 BCG protects the compressed gas cylinders against transfer in the event of incorrect operation. The CV300 BCG can be used in supply systems for inert, flammable and oxidising gases up to a gas quality of 6.0. **The use of the check valve is not possible with corrosive gases or their mixtures.**

SPECIAL FEATURES:

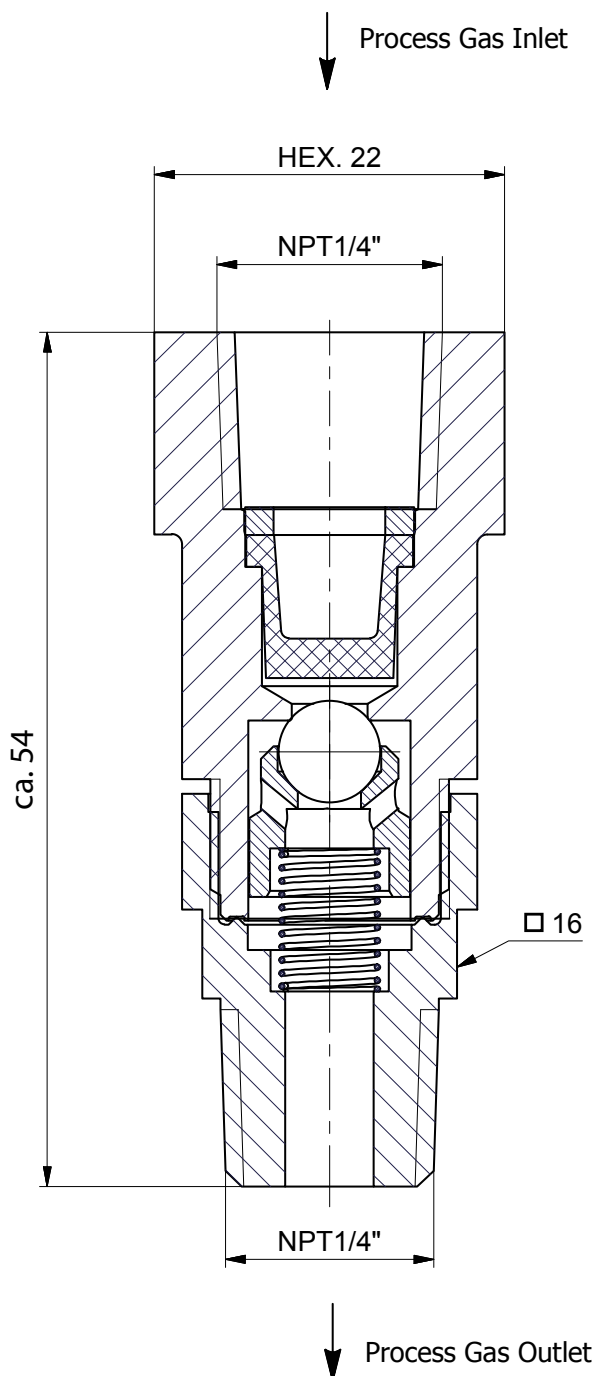
The special seat seal and the use of selected gas-wetted parts allow the use with oxygen up to 300 bar working pressure. The Oxygen ignition test for non-metallic seat sealed check valves which is required during development phase can be omitted with the CV300 BCG due to targeted material selection.

- > Compact design
- > Designed and approved in accordance with relevant sections of ISO 10297:2015
- > Specially cleaned



TECHNICAL DATA	
Working temperature:	-20 °C to +60 °C
Inlet connection:	NPT 1/4 " female
Outlet connection:	NPT 1/4 " male
Max. working pressure:	300 bar
Cv-value:	0,29
Pressure drop at inlet pressure 41 bar and flow 20 m³/h (N₂)	0,5 bar
Pressure drop at inlet pressure 41 bar and flow 100 m³/h (N₂)	3,8 bar
Length:	54 mm
Leakage rate seat at 21 °C:	5x10 ⁻⁶ mbar l/s (Helium)
Leakage rate outside:	1x10 ⁻⁸ mbar l/s (Helium)
Gewicht:	0,07 kg
Material gasberührte Teile:	
Valve body:	Brass chrome plated
Filter:	Sinter Bronze SIK-A-B
Valve seat:	Ceramic (Si3N4)
Spring:	Stainless Steel 316L
Test in production:	Pressure test for each valve
	Test leak rate seat with Helium for each valve
Approvals during development:	Typetest in accordance with relevant sections of ISO 10297:2015

TECHNICAL DRAWING



TECHNICAL SPECIFICATION
 MATERIAL: BRASS CuZn39Pb3 PLATED
 SEAL: SILICON NITRIDE BALL

INLET: NPT1/4"F
 OUTLET: NPT1/4"M

INLET PRESSURE:
 MAX.300BAR

GAS TYPE:
 DEFINED BY PRODUCT LINE AND TYPE
 (CHECK APPROVED GAS TYPE IN DATASHEET)

PUR LINE:
 NON-CORROSIVE GASES
 NON-TOXIC GASES

